



## Bay East

SINGAPORE | 2008-2010

Gustafson Porter + Bowman's designs for Bay East are the winning proposals following an international design competition launched by the Singapore's National Parks Board (NParks) in 2006. The scheme forms an integral part of the strategic development plan within the City to promote Singapore as a 'City within a Garden'. Three gardens, Bay South, Bay East and Bay Central, surround the new fresh water Marina Reservoir. The three distinct waterfront areas are designed to capture the essence of Singapore as the premier tropical 'Garden City'. They reinforce the view that the greening of the city is one of its greatest assets.

Bay East is a 33-hectare public park. Its' 2km promenade offers dramatic views of Singapore's skyline as well as supporting a range of water-sport and cultural facilities.

Previously an estuary, Marina Bay has been turned into a reservoir by a recently completed barrage. It will in time turn the brackish water into a sweet water reservoir which will supply Singapore with drinking water. Our design fully supports this strategic development, by cleansing bay water in reed beds before returning it to the bay.

### AWARDS

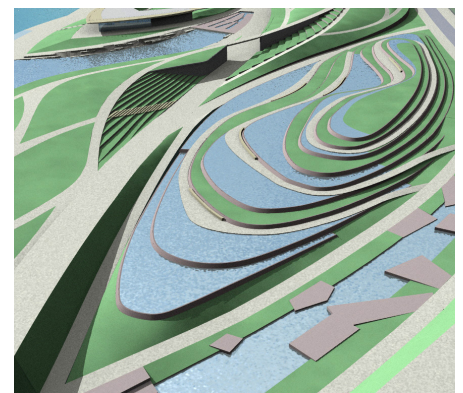
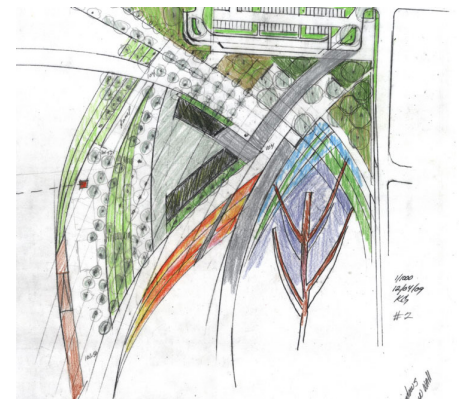
2013 Shortlist, Design Award Wallpaper  
2013 Life Enhancer of the Year for Gardens by the Bay  
2011 Commendation, MIPIM AR Future Projects Awards,  
Category: Big Urban Projects  
2012 Winner, FuturArc Green Leadership Award

The beauty of the tropical leaf provides the inspiration for the garden. Singapore's heat and humidity combine to create a challenging environment. In line with government policy to encourage active lifestyles, a series of environmental strategies combine to improve microclimatic conditions and draw people into the park. New water inlets are created along the existing shore line. They are orientated to draw prevailing winds into the site for cooling breezes. The tropical leaf landforms are clustered around these inlets. Restaurants, cafes and lifestyle centres are tucked into the leaf forms, maximizing green space. The visitor facilities front the water inlets. Arching water jets, sculpted rilles, dramatic waterfalls and wave pools animate the inlets and create a cooling focal point. Each leaf has its' own theme. An Aquatic Terrace reinterprets the traditional rice paddies (Leaf 7). The Fragrant Night Garden embodies sights, smells and sensuality (Leaf 8). The romantic valley creates an atmospheric backdrop for a stroll in the dappled shade of tall trees, with mist (from misting features) rising among tree ferns. Three north-south paths intersect the gardens, with shade canopies provided at regular intervals. A new stepped shore line is created to bring people closer to the water body. Cycle paths are inserted to encourage sport and movement.

The scheme includes measures such as sustainable urban drainage and water re-cycling, habitat corridors and the inclusion of native and adaptive plant species to provide food and educational opportunities.



*"The strength of Gustafson Porter + Bowman's design was in how it brought forth the essence of Marina Bay with subtlety and elegance. The design concept leveraged on the attractive views of the city skyline that you get when you look across the water from Bay East. It also brought out the intimate relationship between the garden and the bay, and provided spaces and display gardens to generate interest and engage people."*  
Dr Kiat W. Tan, CEO of Gardens by the Bay



**ROLE**  
Lead designer and landscape design

**CLIENT**  
NParks Singapore

**PROJECT DURATION**  
2008-2010

**SIZE**  
33ha

**STATUS**  
On hold

**TEAM**  
Architect: Flanagan Lawrence  
Engineer: ARUP (London and Singapore)  
Horticultural Consultant: (Tropical horticulture)  
Sue Minter  
Local Landscape Architect: ICN  
Lighting Designer: Speirs + Major  
Soil scientist: Tim O'Hare  
Client Project Manager: PM Link  
Local Engineer: CPG  
Quantity Surveyor: Davis Langdon Seah