



Highgate Cemetery

LONDON | 2021-

Gustafson Porter + Bowman are preparing a new 25-year masterplan for Highgate Cemetery, to secure its future and ensure it remains a historic, and sustainable, twenty-first century cemetery.

Our vision is to create a topographical exploration and discovery of both Cemeteries. An 'experience plan' that introduces visitors to the inexhaustible wealth of stories held within both Cemeteries that can change and be revealed over time.

The walk up Highgate Hill, starting in the East Cemetery, creates a topographical experience that starts with the original grid of paths and echoes the grid of the surrounding city. We wish to emphasise the major north south paths with new avenues of trees, framing meadows of graves, woodland bosques and mosaics of flowering perennials.

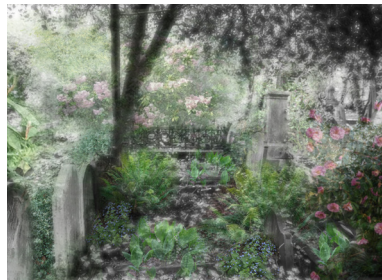
As one rises up the hill, the topography becomes steeper and one is introduced to the arabesque paths of the West Cemetery's picturesque landscape. Here we imagine the woodland opening and closing to reveal glades of sunlight that provide unexpected views, revealing hidden graves and drifts of woodland plants.

At the top of the hill within the Circle of Lebanon, and above the catacombs, the planting gets more exotic, representing a paradise on earth, with fantastic views across the Cemetery's planted hillside to the newly restored Chapel entrance, St Paul's Cathedral and Central London.

The cemetery demands a holistic and bold 'experience plan' which fully respects its use as a working cemetery, and that allows the project to realise its huge potential as a place of deep understanding and open dialogue about death. The experience plan will shape how people engage with the site, its significance and assets. It will ensure that the primary audience (the dead and bereaved) have the best experience, and that other audiences (schools, visitors, tourists) are stimulated and enriched by the place, its themes and stories.



Views of the East Cemetery



Views of the West Cemetery



SCOPE
Landscape masterplan
CLIENT
highgate Cemetery Trust
PROJECT DURATION
25 years beginning 2021

SIZE
14ha

TEAM
Jo Thompson Landscape & Garden Design,
Max Fordham, Bartlett Tree Experts, Donald
Insall Architects, Tim O'Hare and Ashgrove
Ecology.